

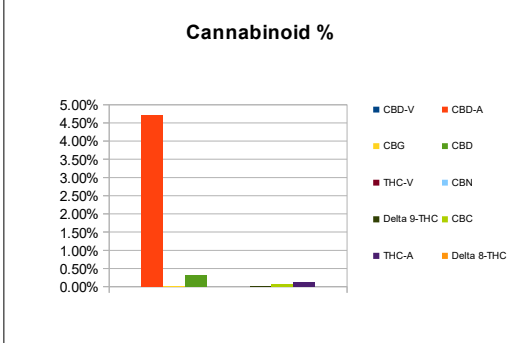
PREPARED BY DESERT VALLEY TESTING FOR:



**DESERT VALLEY TESTING**  
 51 W. Weldon Ave  
 Phoenix, Arizona 85013  
 480-788-6644  
 www.desertvalleytesting.com

Sample Information		
Sample Identification	Hemp Cigz ACDC Fatty	
Laboratory Number	2019011316	
Batch Number	HA1913515-HA19135F1	
Matrix	Flower	
Analyzed Date	05/20/19	
Extraction Date	05/01/19	
Cannabinoid (HPLC)	%	mg/g
Compound		
CBD-V	ND	ND
CBD-A	4.70%	47.03
CBG	0.02%	0.24
CBD	0.33%	3.31
THC-V	ND	ND
CBN	ND	ND
Delta 9-THC	0.02%	0.18
CBC	0.06%	0.63
THC-A	0.12%	1.23
Delta 8-THC	ND	ND
Cannabinoids Total		
Max Active THC	0.13%	1.26
Max Active CBD	4.47%	44.70
T. Active Cannabinoids	0.44%	4.36
Total Cannabinoids	5.26%	52.62

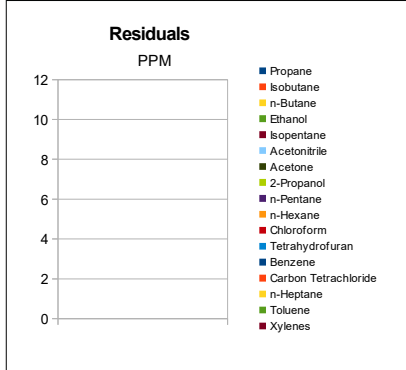
Max Active Ratios		
35.5:1 CBD to THC		
0.0:1 THC to CBD		



Sample Image



RS (GCMS-HS)	PPM	RL
Compound		
Propane	NT	5.0
Isobutane	NT	5.0
n-Butane	NT	5.0
Ethanol	NT	5.0
Isopentane	NT	5.0
Acetonitrile	NT	5.0
Acetone	NT	50.0
2-Propanol	NT	5.0
n-Pentane	NT	5.0
n-Hexane	NT	5.0
Chloroform	NT	5.0
Tetrahydrofuran	NT	5.0
Benzene	NT	5.0
Carbon Tetrachloride	NT	5.0
n-Heptane	NT	5.0
Toluene	NT	5.0
Xylenes	NT	10.0



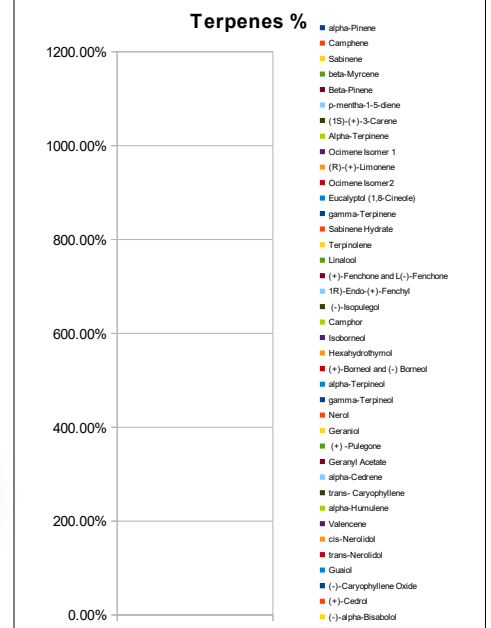
g/medible	1.5
mg THC/medible	0.26
mg CBD/medible	4.97
(mg) total cannabinoids/medible	78.92

Metals	PPM	RL
Compound		
Lead	NT	0.010
Arsenic	NT	0.010
Cadmium	NT	0.010
Mercury	NT	0.001

RL=Reporting Limit  
 NA=Not Applicable  
 NT=Not Tested  
 ND=Non Detected



Terpene (GC-MS)	%	mg/g
Compound		
alpha-Pinene	NT	NT
Camphene	NT	NT
Sabinene	NT	NT
beta-Myrcene	NT	NT
Beta-Pinene	NT	NT
p-mentha-1-5-diene	NT	NT
(1S)-(+)-3-Carene	NT	NT
Alpha-Terpinene	NT	NT
Ocimene Isomer 1	NT	NT
(R)-(+)-Limonene	NT	NT
Ocimene Isomer2	NT	NT
Eucalyptol (1,8-Cineole)	NT	NT
gamma-Terpinene	NT	NT
Sabinene Hydrate	NT	NT
Terpinolene	NT	NT
Linalool	NT	NT
(+)-Fenchone and L(-)-Fenchone	NT	NT
1R)-Endo-(+)-Fenchyl	NT	NT
(-)-Isopulegol	NT	NT
Camphor	NT	NT
Isoborneol	NT	NT
Hexahydrothymol	NT	NT
(+)-Borneol and (-) Borneol	NT	NT
alpha-Terpineol	NT	NT
gamma-Terpineol	NT	NT
Nerol	NT	NT
Geraniol	NT	NT
(+) -Pulegone	NT	NT
Geranyl Acetate	NT	NT
alpha-Cedrene	NT	NT
trans- Caryophyllene	NT	NT
alpha-Humulene	NT	NT
Valencene	NT	NT
cis-Nerolidol	NT	NT
trans-Nerolidol	NT	NT
Guaiol	NT	NT
(-)-Caryophyllene Oxide	NT	NT
(+)-Cedrol	NT	NT
(-)-alpha-Bisabolol	NT	NT
Total Terpenes	NT	NT



Chemist: JR  
 Report Expires: 06/20/19