

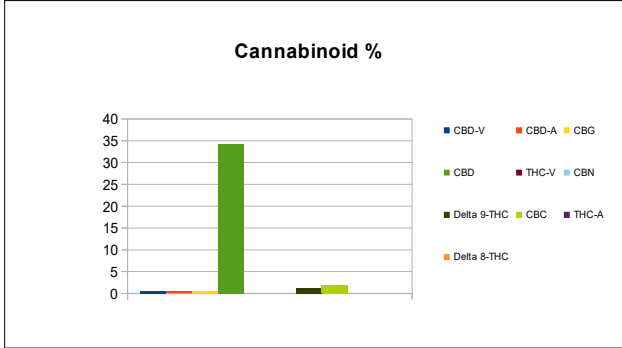
PREPARED BY DESERT VALLEY TESTING FOR:



DESERT VALLEY TESTING
 51 W. Weldon Ave
 Phoenix, Arizona 85013
 480-788-6644
 www.desertvalleytesting.com

Sample Information			
Sample Identification	Tincture Natural Full Spectrum CBD 500mg 15mL		
Laboratory Number	2019012366		
Batch Number	TN1914950015-FS19126C3-G		
Matrix	Tincture		
Analyzed Date	06/03/19		
Extraction Date	06/03/19		
Cannabinoid (HPLC)	mg/mL	mg/Bottle	%
Compound			
CBD-V	0.48	7.24	0.05%
CBD-A	0.44	6.60	0.04%
CBG	0.5	7.47	0.05%
CBD	34.22	513.32	3.44%
THC-V	ND	ND	ND
CBN	ND	ND	ND
Delta 9-THC	1.16	17.46	0.12%
CBC	1.84	27.56	0.18%
THC-A	ND	ND	ND
Delta 8-THC	ND	ND	ND
Cannabinoids Total			
Max Active THC	1.16	17.46	0.12%
Max Active CBD	34.61	519.13	3.48%
T. Active Cannabinoids	38.20	573.05	3.84%
Total Cannabinoids	38.64	579.65	3.88%

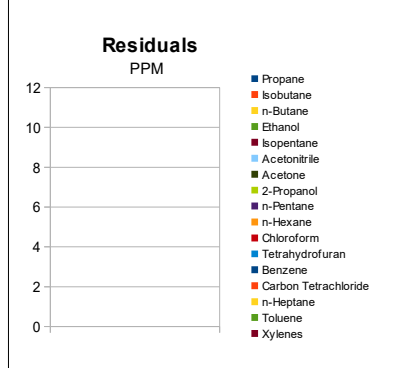
Max Active Ratios
 NA :1 CBD to THC
 0.0 :1 THC to CBD



Sample Image



RS (GCMS-MS)	PPM	RL
Compound		
Propane	NT	5.0
Isobutane	NT	5.0
n-Butane	NT	5.0
Ethanol	NT	5.0
Isopentane	NT	5.0
Acetonitrile	NT	5.0
Acetone	NT	50.0
2-Propanol	NT	5.0
n-Pentane	NT	5.0
n-Hexane	NT	5.0
Chloroform	NT	5.0
Tetrahydrofuran	NT	5.0
Benzene	NT	5.0
Carbon Tetrachloride	NT	5.0
n-Heptane	NT	5.0
Toluene	NT	5.0
Xylenes	NT	10.0



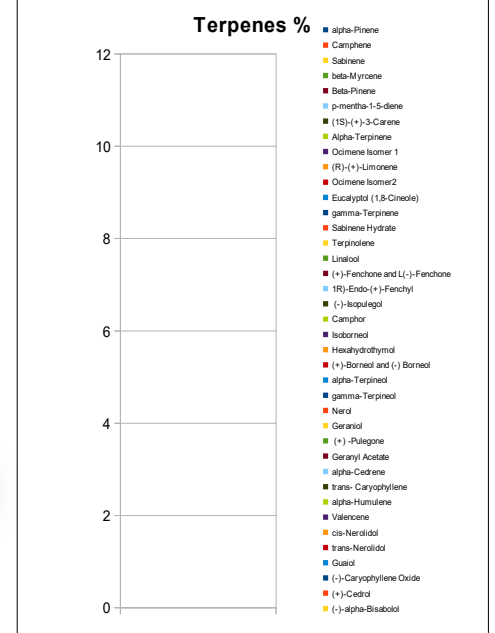
mL/Bottle	15
mg THC/Bottle	17.46
mg CBD/Bottle	513.32
(mg) total cannabinoids/bottle	579.65

Metals	PPM	RL
Compound		
Lead	NT	0.010
Arsenic	NT	0.010
Cadmium	NT	0.010
Mercury	NT	0.001

RL=Reporting Limit
 NA=Not Applicable
 NT=Not Tested
 ND=Non Detected



Terpene (GC-MS)	mg/mL	mg/Bottle
Compound		
alpha-Pinene	NT	NT
Camphene	NT	NT
Sabinene	NT	NT
beta-Myrcene	NT	NT
Beta-Pinene	NT	NT
p-mentha-1-5-diene	NT	NT
(1S)-(+)-3-Carene	NT	NT
Alpha-Terpinene	NT	NT
Ocimene Isomer 1	NT	NT
(R)-(+)-Limonene	NT	NT
Ocimene Isomer2	NT	NT
Eucalyptol (1,8-Cineole)	NT	NT
gamma-Terpinene	NT	NT
Sabinene Hydrate	NT	NT
Terpinolene	NT	NT
Linalool	NT	NT
(+)-Fenchone and L(-)-Fenchone	NT	NT
1R)-Endo-(+)-Fenchyl	NT	NT
(-)-Isopulegol	NT	NT
Camphor	NT	NT
Isoborneol	NT	NT
Hexahydrothymol	NT	NT
(+)-Borneol and (-) Borneol	NT	NT
alpha-Terpineol	NT	NT
gamma-Terpineol	NT	NT
Nerol	NT	NT
Geraniol	NT	NT
(+)-Pulegone	NT	NT
Geranyl Acetate	NT	NT
alpha-Cedrene	NT	NT
trans-Caryophyllene	NT	NT
alpha-Humulene	NT	NT
Valencene	NT	NT
cis-Nerolidol	NT	NT
trans-Nerolidol	NT	NT
Guaiol	NT	NT
(-)-Caryophyllene Oxide	NT	NT
(+)-Cedrol	NT	NT
(-)-alpha-Bisabolol	NT	NT
Total Terpenes	NT	NT



Chemist: EP
 Report Expires: 07/03/19