

PREPARED BY DESERT VALLEY TESTING FOR:



DESERT VALLEY TESTING

51 W. Weldon Ave

Phoenix, Arizona 85013

480-788-6644

www.desertvalleytesting.com

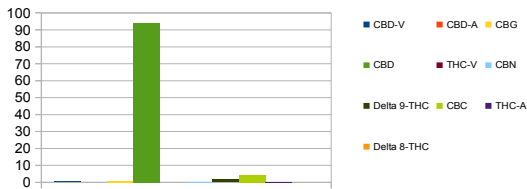
Sample Information			
Sample Identification	3000mg/30ml		
Laboratory Number	2019008427		
Batch Number	NA		
Matrix	Tincture		
Analyzed Date	04/17/19		
Extraction Date	04/17/19		
Cannabinoid (HPLC) Compound	mg/mL	mg/Bottle	%
CBD-V	0.45	13.55	0.05%
CBD-A	ND	ND	ND
CBG	0.81	24.29	0.08%
CBD	94.17	2825.06	9.87%
THC-V	ND	ND	ND
CBN	0.08	2.50	0.01%
Delta 9-THC	1.71	51.41	0.18%
CBC	4.46	133.86	0.47%
THC-A	0.07	1.98	0.01%
Delta 8-THC	ND	ND	ND
Cannabinoids Total			
Max Active THC	1.77	53.16	0.19%
Max Active CBD	94.17	2825.06	9.87%
T. Active Cannabinoids	101.69	3050.68	10.66%
Total Cannabinoids	101.76	3052.66	10.67%

Max Active Ratios

53.1 :1 CBD to THC

0.0 :1 THC to CBD

Cannabinoid %



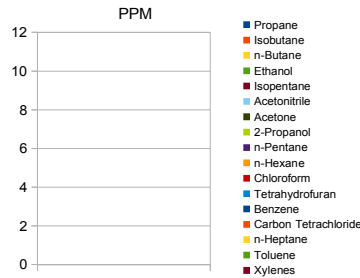
Sample Image



Chemist: EG
Report Expires: 05/17/19

RS (GCMS-MS) Compound	PPM	RL
Propane	NT	5.0
Isobutane	NT	5.0
n-Butane	NT	5.0
Ethanol	NT	5.0
Isopentane	NT	5.0
Acetonitrile	NT	5.0
Acetone	NT	50.0
2-Propanol	NT	5.0
n-Pentane	NT	5.0
n-Hexane	NT	5.0
Chloroform	NT	5.0
Tetrahydrofuran	NT	5.0
Benzene	NT	5.0
Carbon Tetrachloride	NT	5.0
n-Heptane	NT	5.0
Toluene	NT	5.0
Xylenes	NT	10.0

Residuals



mL/Bottle

30

mg THC/Bottle

51.41

mg CBD/Bottle

2825.06

(mg) total cannabinoids/bottle

3052.66

Metals Compound	PPM	RL
Lead	NT	0.010
Arsenic	NT	0.010
Cadmium	NT	0.010
Mercury	NT	0.001

RL=Reporting Limit

NA=Not Applicable

NT=Not Tested

ND=Non Detected



Terpene (GC-MS) Compound	mg/mL	mg/Bottle
alpha-Pinene	NT	NT
Camphene	NT	NT
Sabinene	NT	NT
beta-Myrcene	NT	NT
Beta-Pinene	NT	NT
p-mentha-1-5-diene	NT	NT
(1S)-(+)-3-Carene	NT	NT
Alpha-Terpinene	NT	NT
Ocimene Isomer 1	NT	NT
(R)-(+)-Limonene	NT	NT
Ocimene Isomer 2	NT	NT
Eucalyptol (1,8-Cineole)	NT	NT
gamma-Terpinene	NT	NT
Sabinene Hydrate	NT	NT
Terpinolene	NT	NT
Linalool	NT	NT
(+)-Fenchone and L(-)-Fenchone	NT	NT
1R)-Endo-(+)-Fenchyl	NT	NT
(-)-Isopulegol	NT	NT
Camphor	NT	NT
Isoborneol	NT	NT
Hexahydrothymol	NT	NT
(+)-Borneol and (-) Borneol	NT	NT
alpha-Terpineol	NT	NT
gamma-Terpineol	NT	NT
Nerol	NT	NT
Geraniol	NT	NT
(+) -Pulegone	NT	NT
Geranyl Acetate	NT	NT
alpha-Cedrene	NT	NT
trans-Caryophyllene	NT	NT
alpha-Humulene	NT	NT
Valencene	NT	NT
cis-Nerolidol	NT	NT
trans-Nerolidol	NT	NT
Guaiol	NT	NT
(-)-Caryophyllene Oxide	NT	NT
(+)-Cedrol	NT	NT
(-)-alpha-Bisabolol	NT	NT
Total Terpenes	NT	NT

Terpenes %

